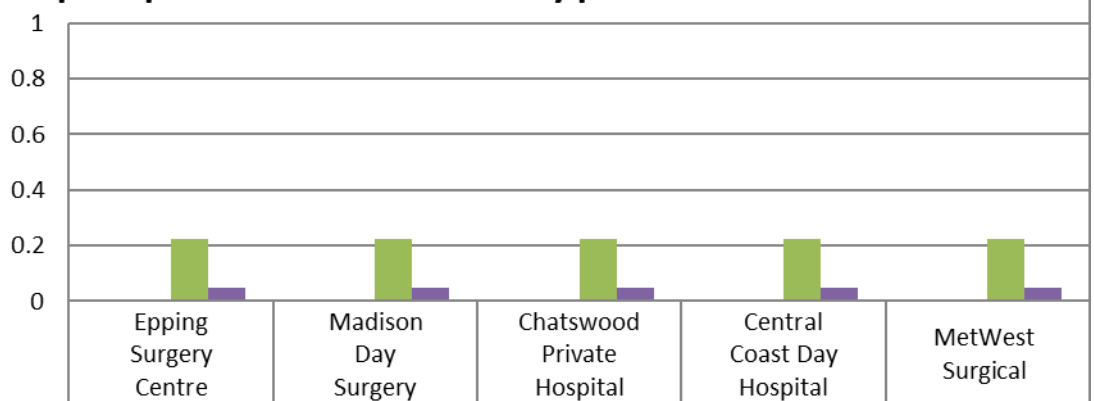


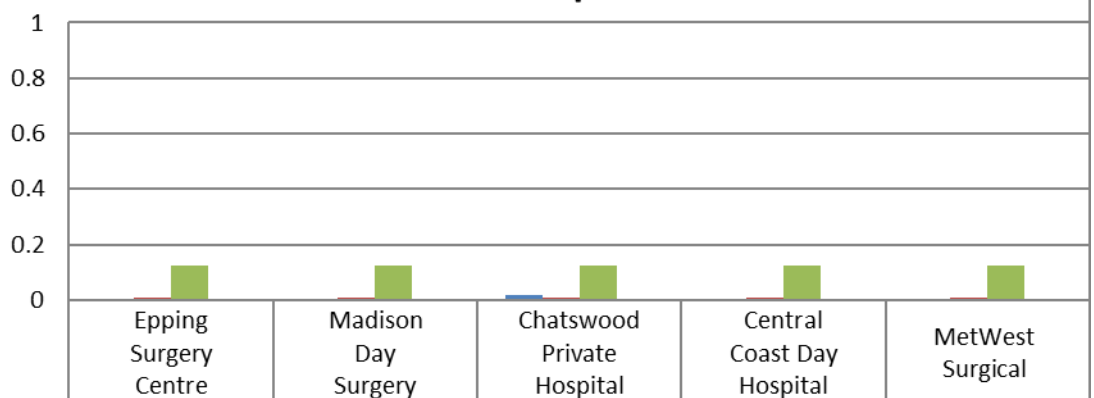
Madison Day Surgery (MDS) is a part of PresMed Australia (PMA). MDS and PMA are members of the Australian Council on Healthcare Standards (ACHS) along with other public and private health facilities across Australia. Every six months, all PMA facilities submit clinical outcomes data to the ACHS to compare and benchmark our clinical care. This data is evaluated by staff, doctors and management to improve patient care, service delivery and quality improvement. Review of our data for the second half of 2022 demonstrates excellent results consistent with high standards of patient safety and clinical outcomes. Below are some key highlights:

### Anaesthesia and Perioperative C 3.4: Severe pain not responding to pain protocol in the recovery period



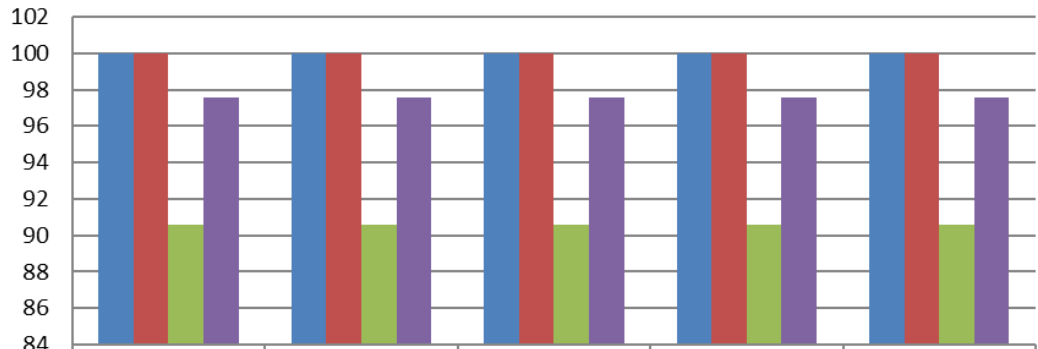
HCO Rate	0	0	0	0	0
Presmed Group Aggregate Rate	0	0	0	0	0
General Aggregate Rate	0.223	0.223	0.223	0.223	0.223
Private Peer Aggregate Rate	0.047	0.047	0.047	0.047	0.047

### Anaesthesia and Perioperative C 4.1 Unplanned ICU admission equal to or less than 24 hours after procedure



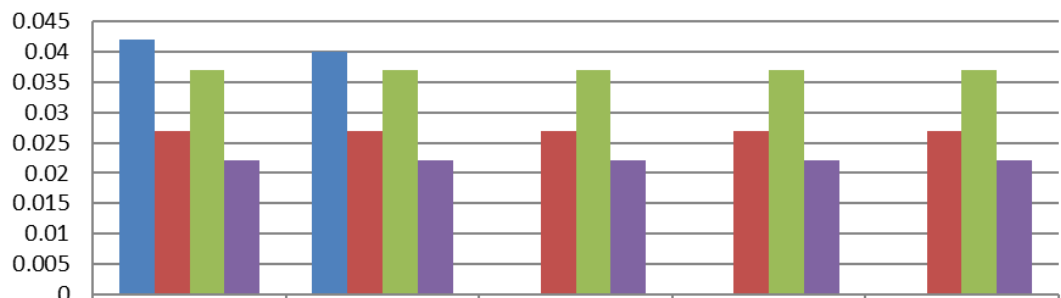
HCO Rate	0	0	0.02	0	0
Presmed Group Aggregate Rate	0.009	0.009	0.009	0.009	0.009
General Aggregate Rate	0.126	0.126	0.126	0.126	0.126
Private Peer Aggregate Rate	0.003	0.003	0.003	0.003	0.003

### Day Patient CI 1.1 Booked patients assessed before admission



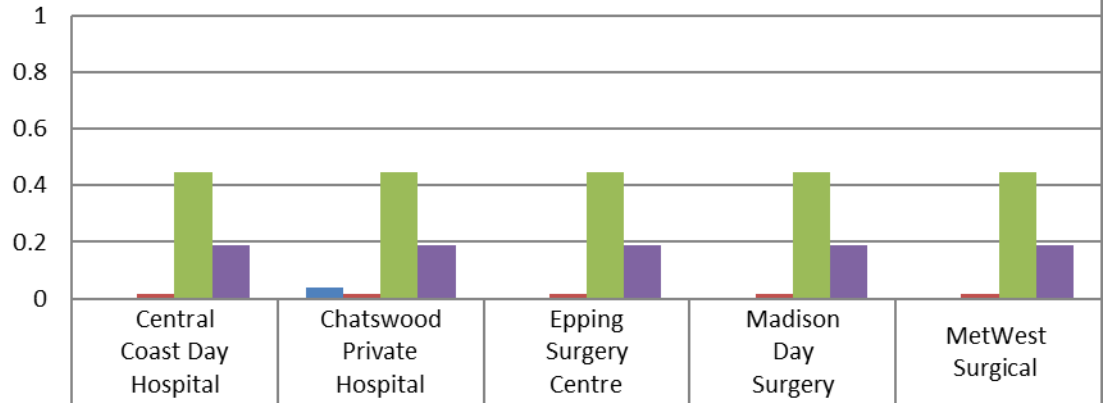
	Central Coast Day Hospital	Chatswood Private Hospital	Epping Surgery Centre	Madison Day Surgery	MetWest Surgical
■ HCO Rate	100	100	100	100	100
■ Presmed Group Aggregate Rate	100	100	100	100	100
■ General Aggregate Rate	90.569	90.569	90.569	90.569	90.569
■ Private Peer Aggregate Rate	97.582	97.582	97.582	97.582	97.582

### Day Patient CI 5.1: Unplanned return to operating room on same day as initial procedure



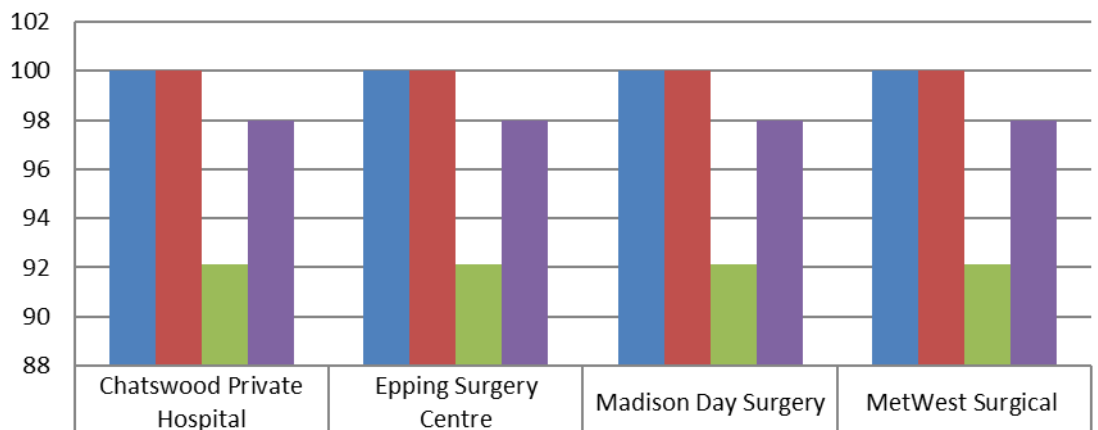
	Central Coast Day Hospital	Chatswood Private Hospital	Epping Surgery Centre	Madison Day Surgery	MetWest Surgical
■ HCO Rate	0.042	0.04	0	0	0
■ Presmed Group Aggregate Rate	0.027	0.027	0.027	0.027	0.027
■ General Aggregate Rate	0.037	0.037	0.037	0.037	0.037
■ Private Peer Aggregate Rate	0.022	0.022	0.022	0.022	0.022

### Day Patient CI 6.1: Unplanned transfer or overnight admission related to procedure



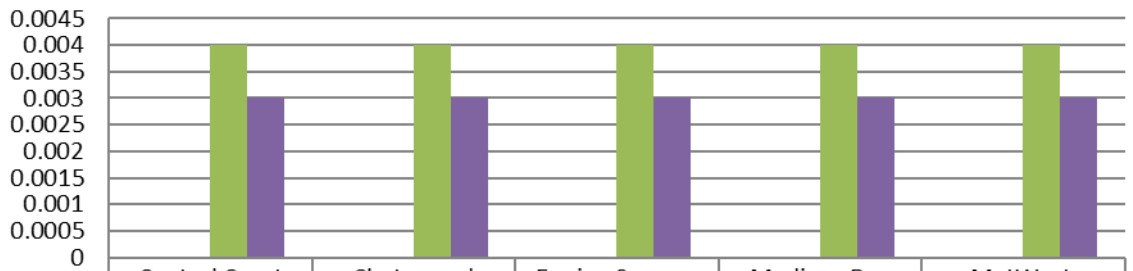
■ HCO Rate	0	0.04	0	0	0
■ Presmed Group Aggregate Rate	0.018	0.018	0.018	0.018	0.018
■ General Aggregate Rate	0.446	0.446	0.446	0.446	0.446
■ Private Peer Aggregate Rate	0.189	0.189	0.189	0.189	0.189

### Day Patient CI 9.1 Follow-up contact within 48 hours



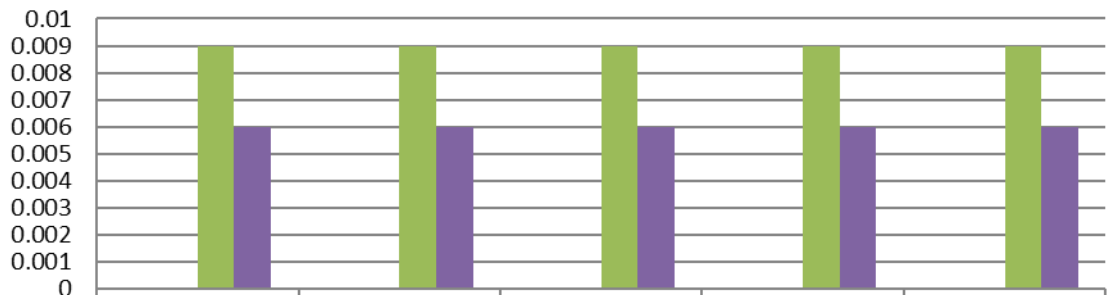
■ HCO Rate	100	100	100	100
■ Presmed Group Aggregate Rate	100	100	100	100
■ General Aggregate Rate	92.15	92.15	92.15	92.15
■ Private Peer Aggregate Rate	97.982	97.982	97.982	97.982

### Medication Safety 6.3 - Medication errors - adverse event requiring intervention



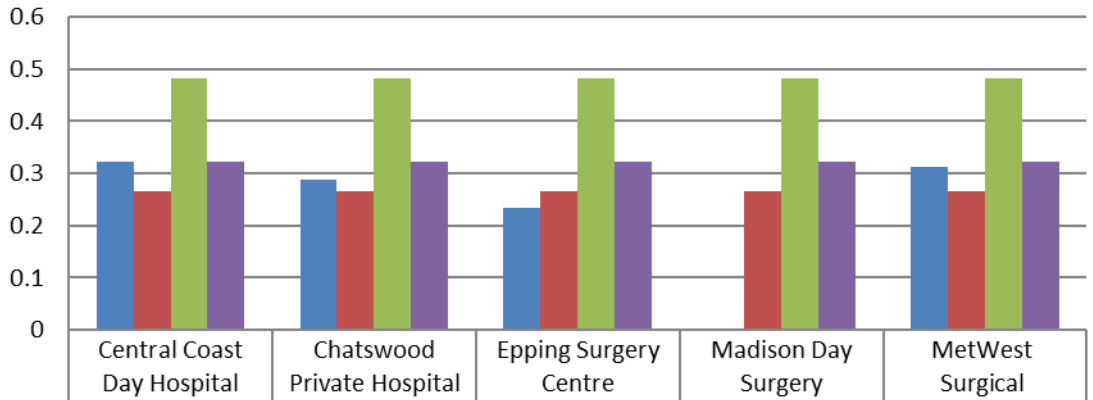
	Central Coast Day Hospital	Chatswood Private Hospital	Epping Surgery Centre	Madison Day Surgery	MetWest Surgical
HCO Rate	0	0	0	0	0
Presmed Group Aggregate Rate	0	0	0	0	0
General Aggregate Rate	0.004	0.004	0.004	0.004	0.004
Private Peer Aggregate Rate	0.003	0.003	0.003	0.003	0.003

### Ophthalmology CI 1.2 Cataract Surgery - Readmission within 28 days due to endophthalmitis



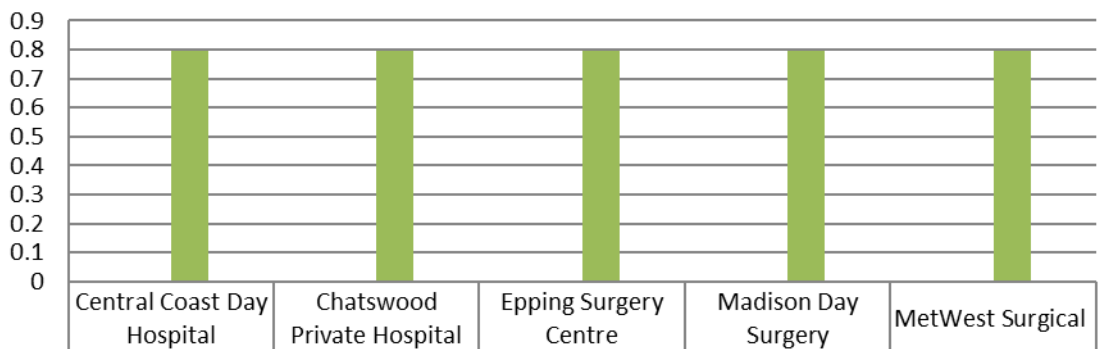
	Central Coast Day Hospital	Chatswood Private Hospital	Epping Surgery Centre	Madison Day Surgery	MetWest Surgical
HCO Rate	0	0	0	0	0
Presmed Group Aggregate Rate	0	0	0	0	0
General Aggregate Rate	0.009	0.009	0.009	0.009	0.009
Private Peer Aggregate Rate	0.006	0.006	0.006	0.006	0.006

### Ophthalmology CI 1.4 Cataract Surgery - Anterior Vitrectomy



	Central Coast Day Hospital	Chatswood Private Hospital	Epping Surgery Centre	Madison Day Surgery	MetWest Surgical
HCO Rate	0.322	0.288	0.235	0	0.313
Presmed Group Aggregate Rate	0.265	0.265	0.265	0.265	0.265
General Aggregate Rate	0.481	0.481	0.481	0.481	0.481
Private Peer Aggregate Rate	0.323	0.323	0.323	0.323	0.323

### Ophthalmology CI 2.1 Intraocular glaucoma surgery - readmission within 28 days



	Central Coast Day Hospital	Chatswood Private Hospital	Epping Surgery Centre	Madison Day Surgery	MetWest Surgical
HCO Rate	0	0	0	0	0
Presmed Group Aggregate Rate	0	0	0	0	0
General Aggregate Rate	0.795	0.795	0.795	0.795	0.795
Private Peer Aggregate Rate	0	0	0	0	0