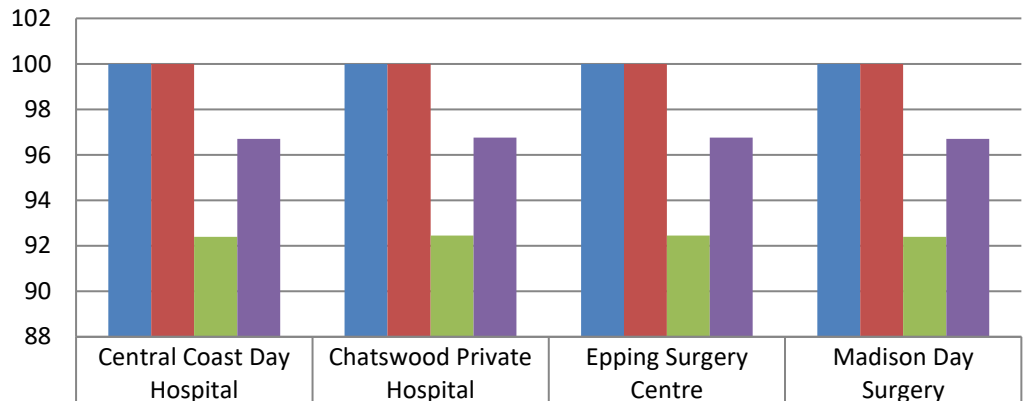


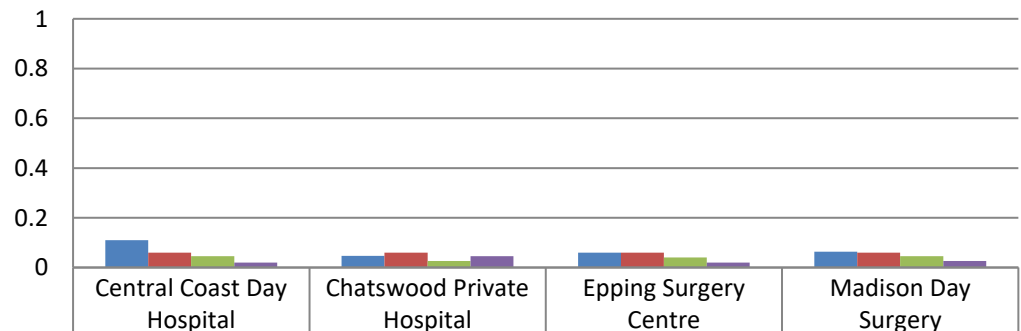
Madison Day Surgery (MDS) is a part of the Presmed Australia (PMA) group of day hospitals. The MDS and PMA group are members of the Australian Council on Healthcare Standards (ACHS) along with other public and private health facilities across Australia. Every six months, all PMA facilities submit clinical outcomes data to the ACHS to compare and benchmark our clinical care. This data is evaluated by staff, doctors and management to improve patient care, service delivery and quality improvement. Review of our data for the first half of 2021 demonstrates excellent results consistent with high standards of patient safety and clinical outcomes. Below are some key highlights:

Day Patient CI 1.1 Booked patients assessed before admission



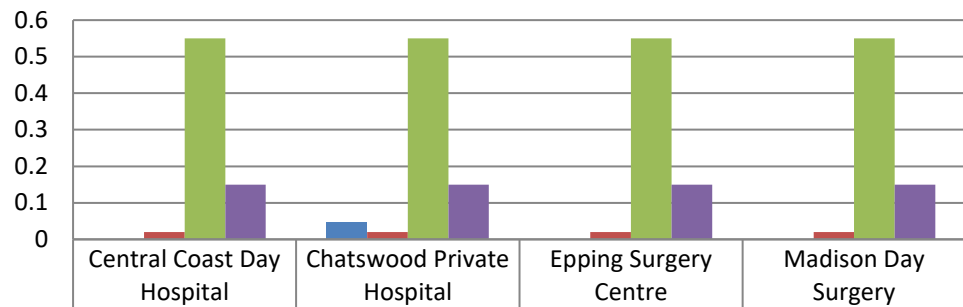
■ HCO Rate	100	100	100	100
■ Presmed Group Aggregate Rate	100	100	100	100
■ General Aggregate Rate	92.4	92.45	92.45	92.4
■ Private Peer Aggregate Rate	96.7	96.76	96.76	96.7

Day Patient CI 5.1: Unplanned return to operating room on same day as initial procedure



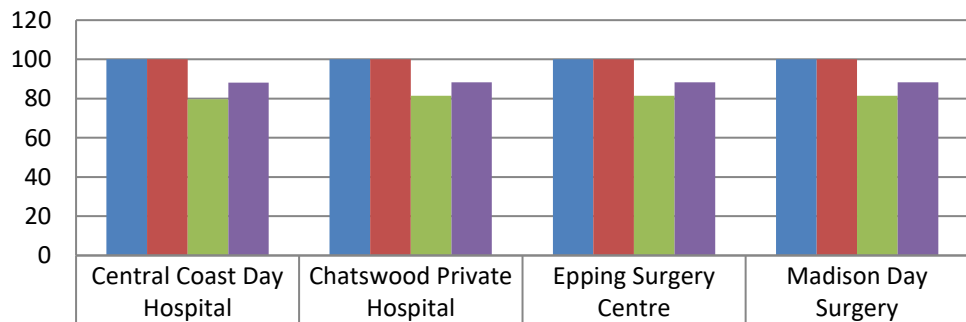
■ HCO Rate	0.11	0.047	0.06	0.063
■ Presmed Group Aggregate Rate	0.06	0.06	0.06	0.06
■ General Aggregate Rate	0.045	0.026	0.04	0.045
■ Private Peer Aggregate Rate	0.02	0.045	0.02	0.026

Day Patient CI 6.1: Unplanned transfer or overnight admission related to procedure



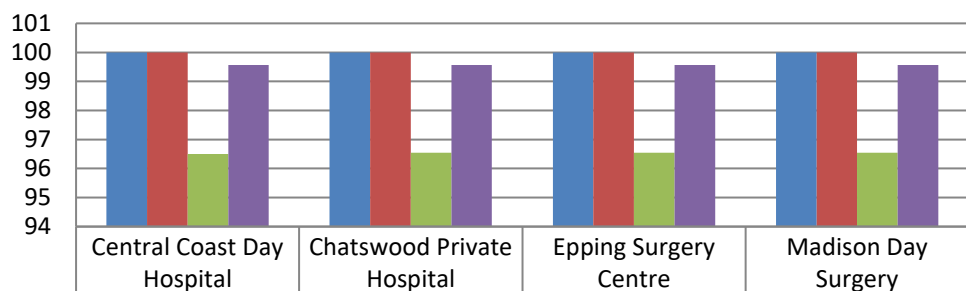
	Central Coast Day Hospital	Chatswood Private Hospital	Epping Surgery Centre	Madison Day Surgery
HCO Rate	0	0.047	0	0
Presmed Group Aggregate Rate	0.02	0.02	0.02	0.02
General Aggregate Rate	0.55	0.55	0.55	0.55
Private Peer Aggregate Rate	0.15	0.15	0.15	0.15

Day Patient CI 9.1 Follow-up contact within 48-hours



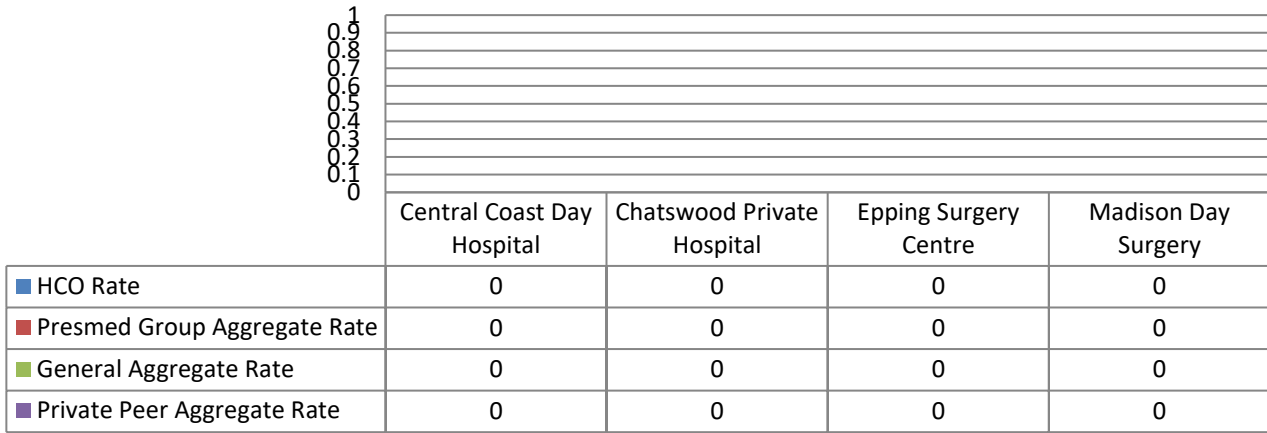
	Central Coast Day Hospital	Chatswood Private Hospital	Epping Surgery Centre	Madison Day Surgery
HCO Rate	100	100	100	100
Presmed Group Aggregate Rate	100	100	100	100
General Aggregate Rate	79.63	81.42	81.42	81.42
Private Peer Aggregate Rate	88.08	88.37	88.37	88.37

Day Patient CI 9.2 Completeness of follow-up instruction form for patients

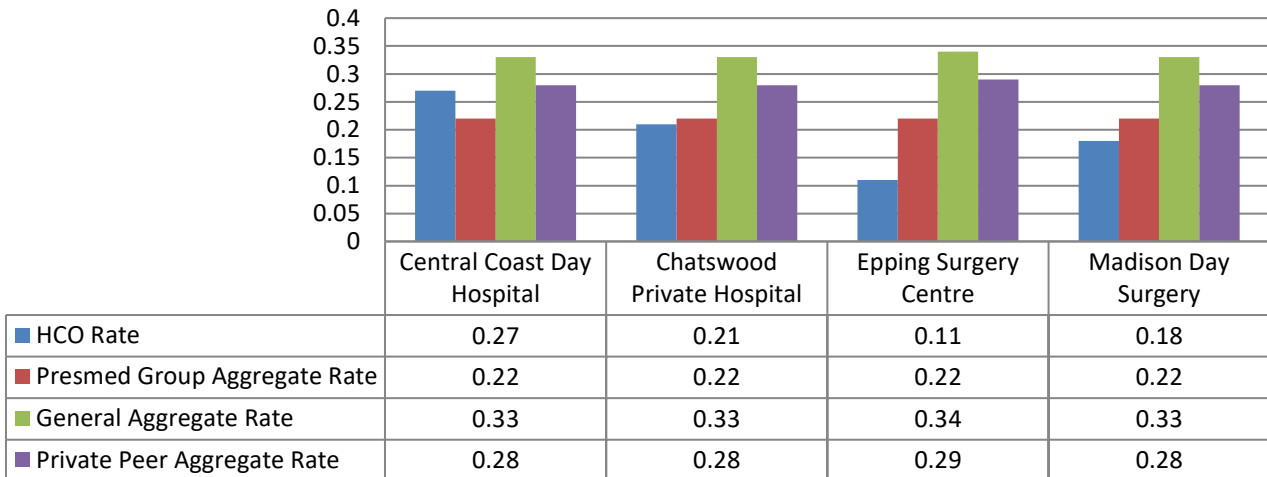


	Central Coast Day Hospital	Chatswood Private Hospital	Epping Surgery Centre	Madison Day Surgery
HCO Rate	100	100	100	100
Presmed Group Aggregate Rate	100	100	100	100
General Aggregate Rate	96.5	96.54	96.54	96.54
Private Peer Aggregate Rate	99.57	99.57	99.57	99.57

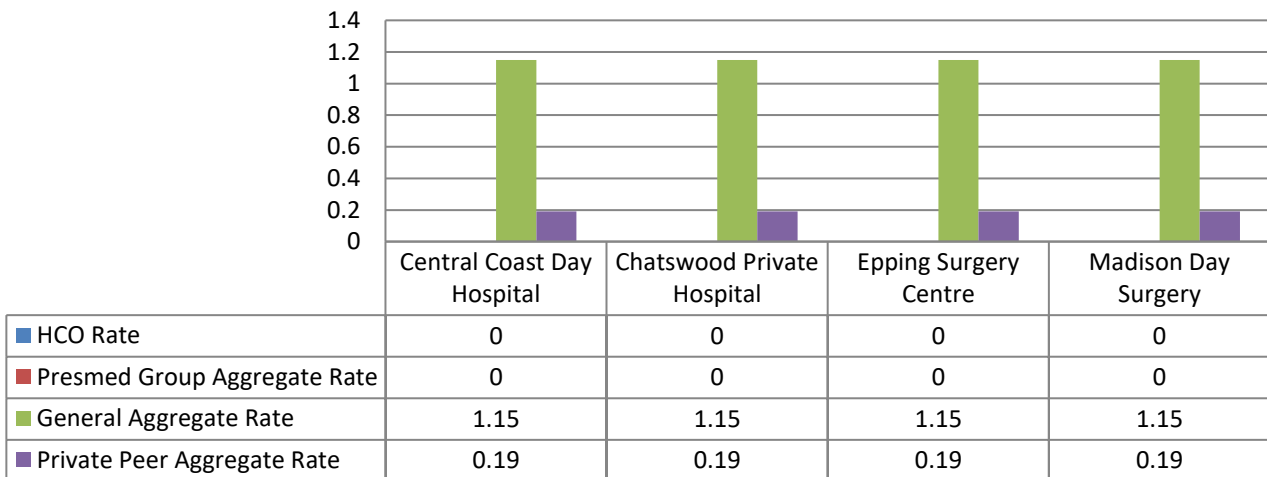
Ophthalmology CI 1.2 Cataract Surgery - Readmission within 28 days due to endophthalmitis



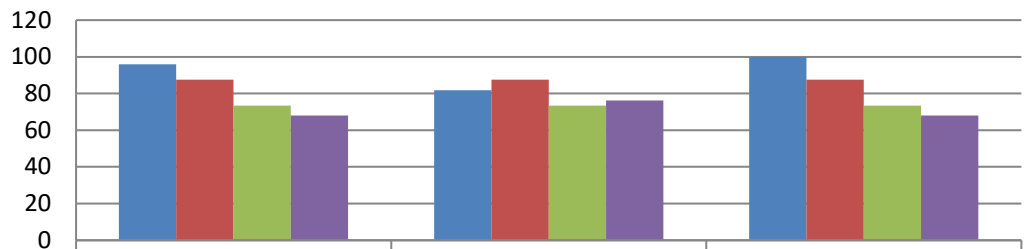
Ophthalmology CI 1.4 Cataract Surgery - Anterior Vitrectomy



Ophthalmology CI 2.1 Intraocular glaucoma surgery - readmission within 28 days

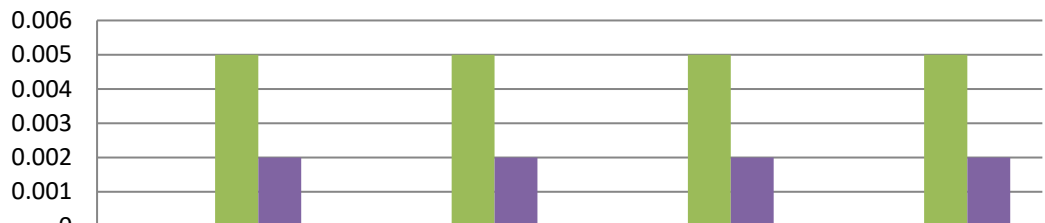


Paediatrics CI 1.1 Registered nurses with paediatric basic life support qualifications



	Central Coast Day Hospital	Chatswood Private Hospital	Epping Surgery Centre
HCO Rate	96	81.81	100
Presmed Group Aggregate Rate	87.62	87.62	87.62
General Aggregate Rate	73.49	73.49	73.49
Private Peer Aggregate Rate	68.02	76.25	68.02

6.3 Medication Safety - Medication errors - adverse event requiring intervention



	Central Coast Day Hospital	Chatswood Private Hospital	Epping Surgery Centre	Madison Day Surgery
HCO Rate	0	0	0	0
Presmed Group Aggregate Rate	0	0	0	0
General Aggregate Rate	0.005	0.005	0.005	0.005
Private Peer Aggregate Rate	0.002	0.002	0.002	0.002